

*The method of reporting has changed forever within financial management systems. Management Accountants have long controlled the use of financially based reports.*

### Integrated Business Solutions

Information was traditionally only available through the finance team and by the time it was received it was typically out of date.

In addition to this, organisations are under increasing pressure to produce and monitor Key Performance Indicators (KPI's) and quantifiable measurements of activity.

Integra Business Performance Monitor (IBPM) has been introduced to provide pro-active reporting of business critical information.

IBPM enables key financial and statistical data to be monitored on line within the Integra application, notifying users electronically if predefined criteria or tolerances have been met.

IBPM allows for the ongoing management of all data held within the Integra application suite, as well as third party data that has been either uploaded to the system or is available through third party ODBC links.

### Key Performance Indicators

The system offers full flexibility in the creation of Performance Indicators. Users can select each area to be monitored and define minimum and maximum warning alert levels.

Each statistic within the KPI can be monitored and managed independently; if the predefined criteria are met an electronic alert can be sent to designated users.

Parameters allow various display options to be set. This ensures that although full monitoring of data is occurring, users are only informed if the alert level is reached.

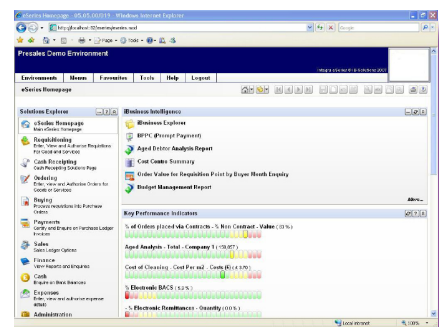
KPI alerts are available through e-mails and Integra eSeries providing relevant information in an intuitive format.

### Online Summary

Management information in a format that allows users to seamlessly drill down to corresponding detailed information.

Users can be notified via email of a tolerance breach and be automatically directed to the appropriate web based screen providing full data interrogation facilities.

This includes, where appropriate, drill down to supporting transactions and document images.



#### Features

- Dynamic reporting & analysis tools
- Easy to use
- Fully integrated with Integra
- Schedule & distribute reports
- Scorecard functionality

#### Business Benefits

- Analyse and gain insight
- Improves organisational effectiveness
- Improves alignment
- Track Key Performance Indicators (KPIs)
- Easy for decision-makers to access information

## Professional Services

Capita IB Solutions has an excellent track record of delivering expert support and consulting to Public, Private and Not for Profit Organisations. Ranging from top-down business analysis and enterprise modelling to database design, application implementation and tuning, a comprehensive package of methodologies, support, training and consultancy services has been developed to ensure the success of all projects within a defined framework of quality, cost and time.

Business Strategy	Technical Support	Healthchecks	Implementation & Design
Our consultants can work with you to ensure your business strategy is supported by coherent and business-aligned systems.	We offer a full range of technical consultancy and support services to ensure the effective delivery of your Integra solution.	Our regular healthchecks review the solution architecture and recommend changes or enhancements.	We assist clients during all phases of the development life cycle, with teams encouraged to acquire the knowledge to maintain and support the systems.

“With independent industry research indicating a ROI of up to 2,000%, a business intelligence application should be a key component of your system’s architecture.”

### Operation

When a user successfully connects to Integra eSeries they are presented with relevant information to support the running of their department or business unit. This includes, but is not limited to:

#### Purchasing

- Total Value of orders Outstanding
- Volume of Orders raised by Department
- % of Remittances / Orders sent electronically
- Call off orders remaining Accounts Payable
- Prompt Payment Performance by Department
- Value and Quantity of invoices processed per month
- % of Payments made by BACS Accounts Receivable
- Debt Analysis per department/debt type
- % of Debt collected by Direct Debit Statistical Data Management
- Cost of Agency / Temporary staff
- Cost of maintenance per housing property
- Cost of Leisure services per head of population

### Budget Monitoring

- Warnings on Actuals, Variance and Budget overspend

#### Financial Management Reporting

- Warnings linked to Profit and Loss activity
- Sales and Revenue Activity

The system also provides full historical data analysis ensuring managers are able to quickly view year to date and previous year comparisons.

This allows for full of analysis departmental and organisational performance.

IBPM is designed to provide a performance management tool focused specifically on financial and statistical data within and related to the finance function.

It can provide managers with key performance and measurement information assisting the organisation in meeting its business goals and any requirements set by Government.

The Spirella Building  
Bridge Road  
Letchworth Garden City  
Herts SG6 4ET England

[www.ibsolutions.com](http://www.ibsolutions.com)