

The Integra Stock Management System allows you to record, control and manage all aspects of stock demands and movements. It enables the receipting, tracking, transferring and issuing of stock as well as giving you up-to-date information on stock values.

Integrated Business Solutions

Integra Stock Management is one of the comprehensive range of modules making up the Integra Financial Management system.

It combines with Purchasing and General Ledger modules in a fully compatible and cohesive environment to provide a totally integrated Stock Management System.

Each of these modules can be run independently or fully integrated in any combination to suit an individual organisation's exact implementation and business requirement.

As with all modules of Integra, the Stock Management module is available to users on either a web-based or client server platform.

The Integra Stock Management System allows you to record, control and manage all aspects of stock demands and movements. It enables the receipting, tracking, transferring and issuing of stock as well as giving you up-to-date information on stock values.

With the Integra Stock Management System, you have complete control over precisely how your system should operate.

You can switch on or off bin coding, automatic transaction numbering, document security numbering etc.

You can decide exactly how the terms used in the systems should be defined: bin or location code, catalogue or part code and so on. You can also set the length and masking for these codes to ease the migration to Integra from older systems.

The system allows a wide range of information to be stored for each stock record: safety and emergency stock levels, maximum and minimum order and issue quantities, batch tracking codes, sell-by dates, lead times, shelf life etc.

The entry of stock movement transactions is speeded up considerably by the use of lookups to retrieve stock codes quickly and by a facility which assigns a kit reference to recurring sets of stock items, allowing them to be issued in bulk.

You can opt to add a mark-up on stock issues with full control being provided on its application.

Stock Movements

All movements are updated immediately to the transactions file and each transaction can be numbered either manually or automatically.

Apart from the stock movements generated by the stock request module, programs are available to enter stock receipts, returns, write-offs, write-backs, ad-hoc stock issues, inter-store transfers and bin transfers.

Forward Requests and Back Orders

The system caters for the entry of stock requests against which stock allocations are made.

If no stock is available, requests can be put on back order pending receipt of additional stock.

Forward requests can be made in anticipation of any known future demand and the suggested ordering module will take account of these when suggesting reorder quantities.

Standing Requests can be maintained for particular stock items at defined frequencies and for a defined time span.

Features

- Easy to use
- Fully integrated
- Flexible
- Web-based or client server

Business Benefits

- Accurate and up-to-date stock levels
- Access mission-critical information
- Increased productivity
- Reduce operational costs

These are automatically activated on the appropriate date. Pre-coded requests are available, which function as request templates covering a given set of recurring items.

Request Authorisation

You can limit the requisitioning points and categories of goods which can be requested.

You can apply authorisation processes to requests for particular items which exceed a specified quantity and/or specified value.

The Entitlements module allows you to set restrictions on issues of selected stock items such as protective clothing, based on predefined entitlements at selected requisitioning points.

Stock Checking

Stock checking can be carried out on an ad-hoc basis by grouping items using a stock check cycle code or by generating a list of items selected randomly.

You have the option of reconciling any stock discrepancies by writing off and writing back stock either manually or automatically.

Integration

The Stock Management and Purchasing Systems are fully integrated and share a large number of files such as locations, requisitioning points, item categories and parts catalogues.

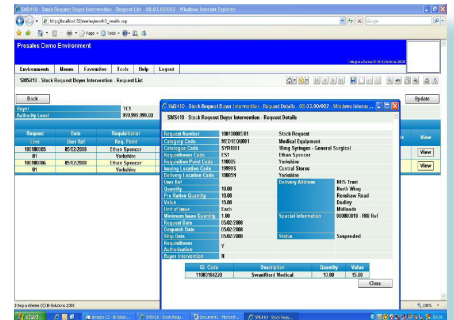
Stock records are automatically updated to reflect outstanding orders and purchase order receipts.

The suggested ordering module can be used to suggest purchase order quantities to replenish stock, based on current stock levels and demand history.

The system caters for automatic generation of stock purchase orders, if required, with prices and supplier details being retrieved from contract details held in the purchasing system.

Alternatively, you can produce suggested order reports which can then be used as the basis for entering purchase orders manually.

The system is also integrated with the Integra General Ledger. General Ledger codes used by the Stock System are validated against the codes held on the General Ledger master file, and transaction values are consolidated in the General Ledger.



In addition, integration with the Integra mCommerce mobile stock solution allows users to issue, receipt and check stock levels throughout several locations with the use of handheld devices.

The devices then upload and reconcile with Integra, producing reports highlighting discrepancies etc.

Workflows

Throughout the Integra System, user-definable workflows can be set up to automate internal business processes.

For example, an email workflow can automatically be generated on entry of a Stock Request Line that requires intervention by a requisitioner's superior. An email will automatically be sent to the superior.

The utilisation of workflows automates work processes within an organisation, enabling users to exploit the full potential of the Integra system.

Professional Services

Capita IB Solutions has an excellent track record of delivering expert support and consulting to Public, Private and Not for Profit Organisations. Ranging from top-down business analysis and enterprise modelling to database design, application implementation and tuning, a comprehensive package of methodologies, support, training and consultancy services has been developed to ensure the success of all projects within a defined framework of quality, cost and time.

Business Strategy	Technical Support	Healthchecks	Implementation & Design
Our consultants can work with you to ensure your business strategy is supported by coherent and business-aligned systems.	We offer a full range of technical consultancy and support services to ensure the effective delivery of your Integra solution.	Our regular healthchecks review the solution architecture and recommend changes or enhancements.	We assist clients during all phases of the development life cycle, with teams encouraged to acquire the knowledge to maintain and support the systems.

“With the Integra Stock Management System, you have complete control over precisely how your system should operate.”

On-line Enquiries and Reports

The Integra Stock Management System comes complete with a comprehensive on-line enquiry facility which can be used to enquire on quantities-on-hand, expected deliveries, committed stock, stock movement history and stock requests and replenishment details.

Alternative Item enquiries can be used to see what alternatives are available in the event that a required item is out of stock.

Stock valuation enquiries are available based on various costing methods: Standard, Replacement, Average Cost or FIFO (First In First Out).

Movement Analysis Type codes can be attached to selected stock items to provide you with a means of linking together related stock items for analysis purposes on enquiries and reports.

In addition, the full functionality of the integrated report writing application, Crystal Reports, is available to enable the creation of both regular and ad-hoc reports.

These can be added to any system menu to form part of a regular, but highly individualised, process.

The use of Integra system tools and utilities supports the creation of additional data fields and screen forms.

These can be added to any data entry process or menu, as appropriate, to support business processes for any organisation using the Integra Stock Management System module.

The Spirella Building
Bridge Road
Letchworth Garden City
Herts SG6 4ET England

www.ibsolutions.com